

An architectural rendering of a modern, multi-story building with a prominent corner glass facade and a flat roof. The building is surrounded by trees and a paved area with people walking. A car is parked on the street in the foreground. The sky is blue with white clouds.

10 PARKS BOULEVARD

OXFORD
PARKS



CONTENTS

INTRODUCTION
PERFECTLY LOCATED
WELL CONNECTED
PRECINCT CONCEPT
ESG PRINCIPLES
10 PARKS BOULEVARD DEVELOPMENT
BUILDING RENDERS
FLOOR PLANS
AREA SCHEDULE
BUILDING HIGHLIGHTS
COMPLETED & CURRENT DEVELOPMENTS
CURRENT TENANTS
PRECINCT AMENITIES
CONTACT

OXFORD PARKS

OXFORD PARKS, AN EXTENSION OF THE ESTABLISHED MATURE ROSEBANK NODE, IS A **VIBRANT MIXED-USE PRECINCT** COMPRISING OFFICES, BESPOKE RETAIL AND AN ARRAY OF RESIDENTIAL DEVELOPMENTS AND HOTELS. THE EMPHASIS IS ON A **HIGH QUALITY PUBLIC ENVIRONMENT**, PAIRED WITH PEDESTRIAN LEVEL RETAIL ACTIVITY WHICH ALLOWS OXFORD PARKS TO EMBODY A **DYNAMIC HIGH-STREET CULTURE**. GENEROUS SETBACKS FORM WIDE **LANDSCAPED** PAVEMENTS ACCOMMODATING PEDESTRIAN **PATHS, CYCLE LANES, PIAZZAS & LINEAR PARKS**. THESE LANDSCAPED AREAS PROMOTE THE USE OF THE PUBLIC REALM & PROVIDE SPACES FOR **ART & ENTERTAINMENT LED INSTALLATIONS** & ACTIVITIES. OXFORD PARKS FOCUSES ON THE DEVELOPMENT OF STATE OF THE ART, EFFICIENT, **GREEN STAR RATED** BUILDINGS AS WELL AS PUBLIC AREAS. OXFORD PARKS, BEING A **PRIVATELY MANAGED** PRECINCT, WILL FACILITATE THE SECURITY, LANDSCAPING & SERVICE DELIVERY TO PUBLIC AREAS ENSURING SEAMLESS OPERATIONS WITHIN THE PRECINCT. OXFORD PARKS, COMPLIMENTED BY **ESTABLISHED & COSMOPOLITAN ROSEBANK** IS FAST SECURING ITS IDENTITY IN THE CITY. OXFORD PARKS TRULY EXEMPLIFIES THE CONNECTIVITY OF **BUSINESS, LIFE & LEISURE**. 10 PARKS BOULEVARD WILL BE NO EXCEPTION TO THE HIGH QUALITY DEVELOPMENT FINISH THAT OXFORD PARKS PRIDES ITSELF ON.



PERFECTLY LOCATED

Points of interest:

- 4 Highway access points
- High intersection density and smaller more efficient grids
- Proximity to Rosebank Gautrain station and bus system
- Variety of excellent public transport
- Walk-ability
- Road and infrastructure upgrades
- Engineering services agreement
- New Parks Boulevard

Oxford Parks Precinct

Illovo Boulevard & Rosebank CBD

Green Belts

Gautrain Bus Stops

Schools

Commercial Offices

Golf Courses

Places of Worship

Hospitals

Rosebank Retail

Rosebank Gautrain station

Radisson RED

Planned Commercial HQ

The Village

Villoresi Office Park

Planned express grocery store

Corlett Drive

Athol Oaklands Road

Glenhove Road

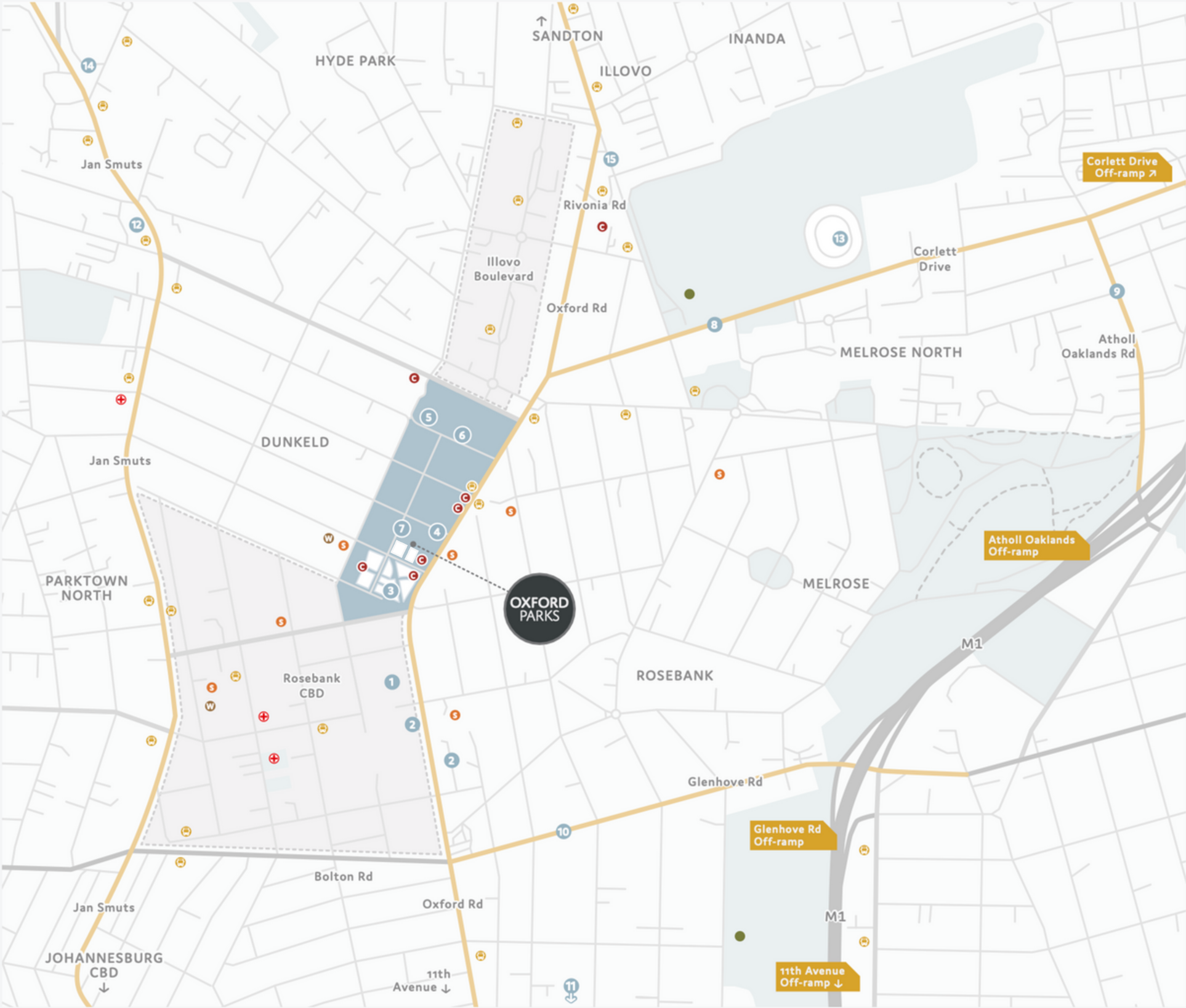
11th Avenue

Dunkeld West Shopping Centre

Wanderers Stadium

Hyde Park Shopping Centre






Thrupps Illovo Centre

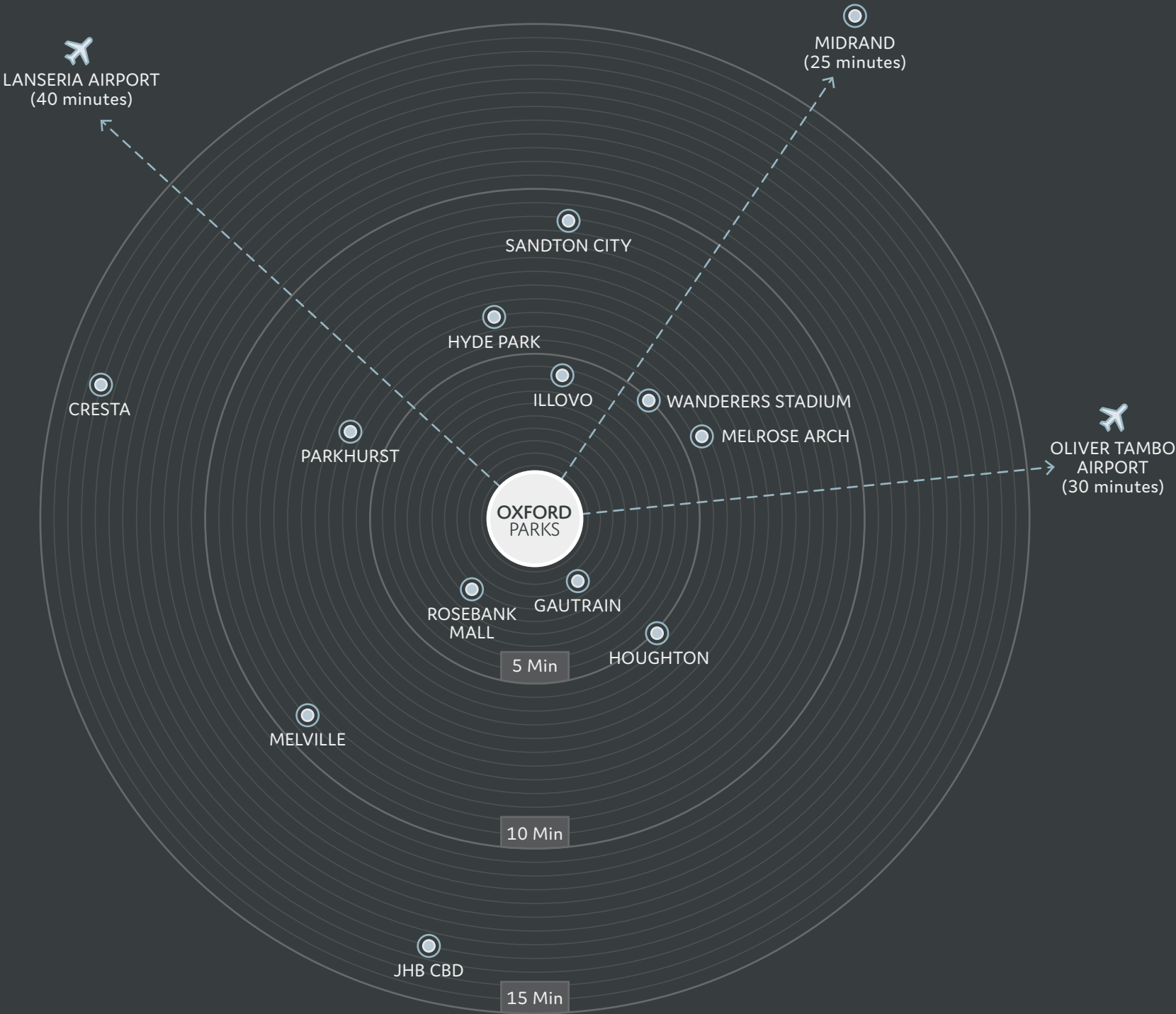




WELL CONNECTED

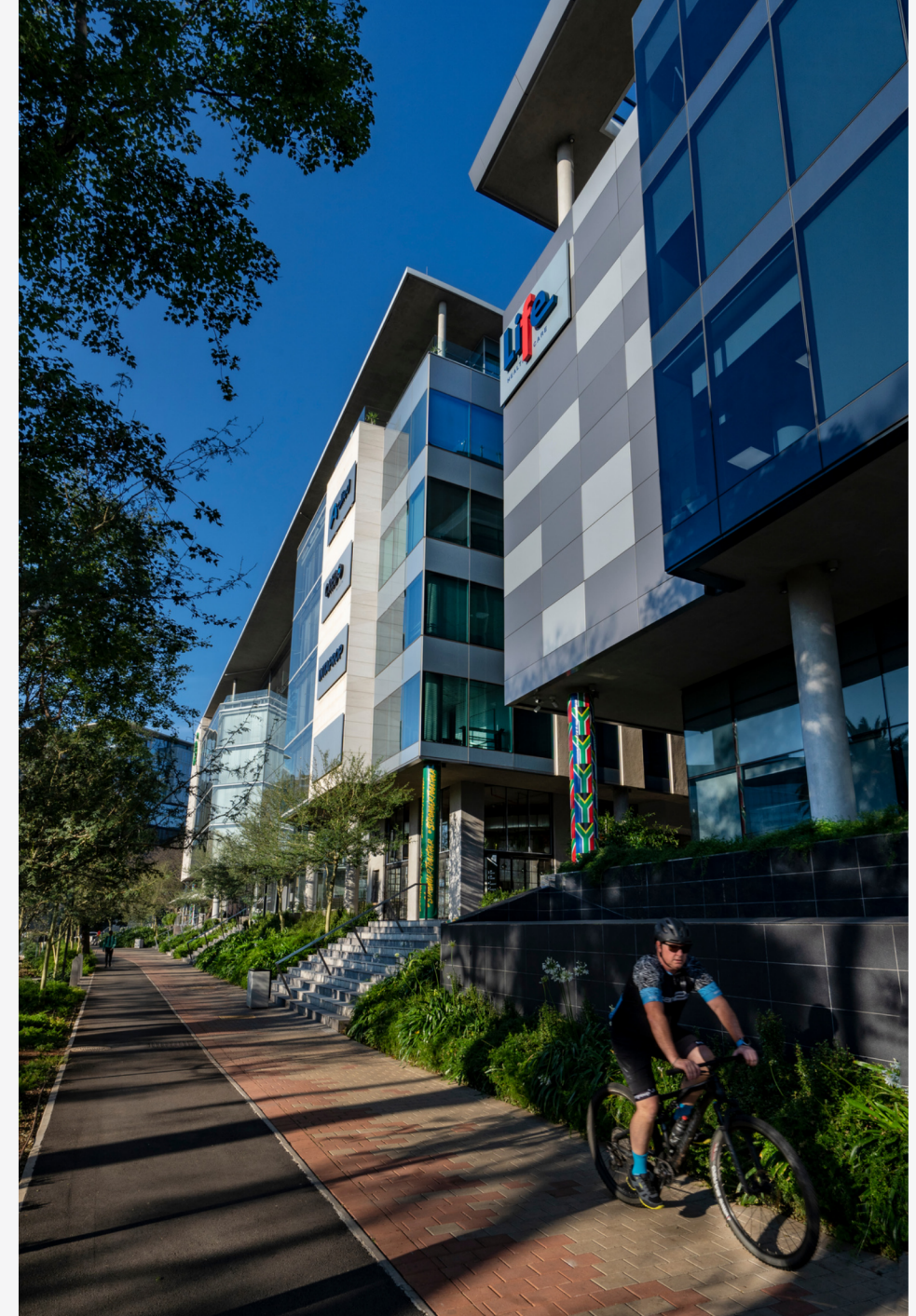
The Oxford Parks precinct is an energetic and responsive urban destination designed to facilitate a seamless connection between life, leisure and business. The primary choice to locate and invest; a place where people succeed and enjoy life.

	GAUTRAIN STATION This station links Rosebank and surrounds to Soweto, Pretoria and OR Tambo	5 Minutes
	ROSEBANK RETAIL Houses over 200 shops and restaurants	5 Minutes
	ILLOVO A well established residential area and a growing office node	5 Minutes
	SANDTON CITY One of the largest shopping malls in Africa	9 Minutes
	OLIVER TAMBO AIRPORT International airport	30 Minutes



PRECINCT CONCEPT

- Mixed-use precinct
- Extension of Rosebank
- Established mature node
- Epicenter of Johannesburg
- Privately managed precinct
- Precinct management of security, cleaning and public services
- Lifestyle focused
- Precinct convenience & bespoke retail
- Retail service-related amenities
- Human scale development
- Dynamic high-street culture
- Tree-lined piazzas and linear parks
- Pedestrian focused public environment
- Cycle lanes
- Connectivity



ESG PRINCIPLES



THE OXFORD PARKS PRECINCT

Oxford Parks is emerging as the gem of Rosebank's lifestyle experience. It's economy is moving from commerce to a walkable street culture. This precinct is the new home of Rosebank's cosmopolitan café and city aficionado. From the remarkable Joburg skyline staircase to the central pedestrian walkways and street piazzas, the Oxford Road entrance makes Oxford Parks a unique destination for the area's residents and occupiers of the Green Star, state of the art buildings within the precinct. Oxford Parks focuses on the exceptional quality of the public environment and the precinct activity promotes the use of the public realm by its tenants and users and provides spaces for art and entertainment-led installations and activities. Oxford Parks, complimented by established and cosmopolitan Rosebank is fast securing its identity in the heart of the city.



Aerial view of the Oxford Parks precinct with Sandton in the distance.

















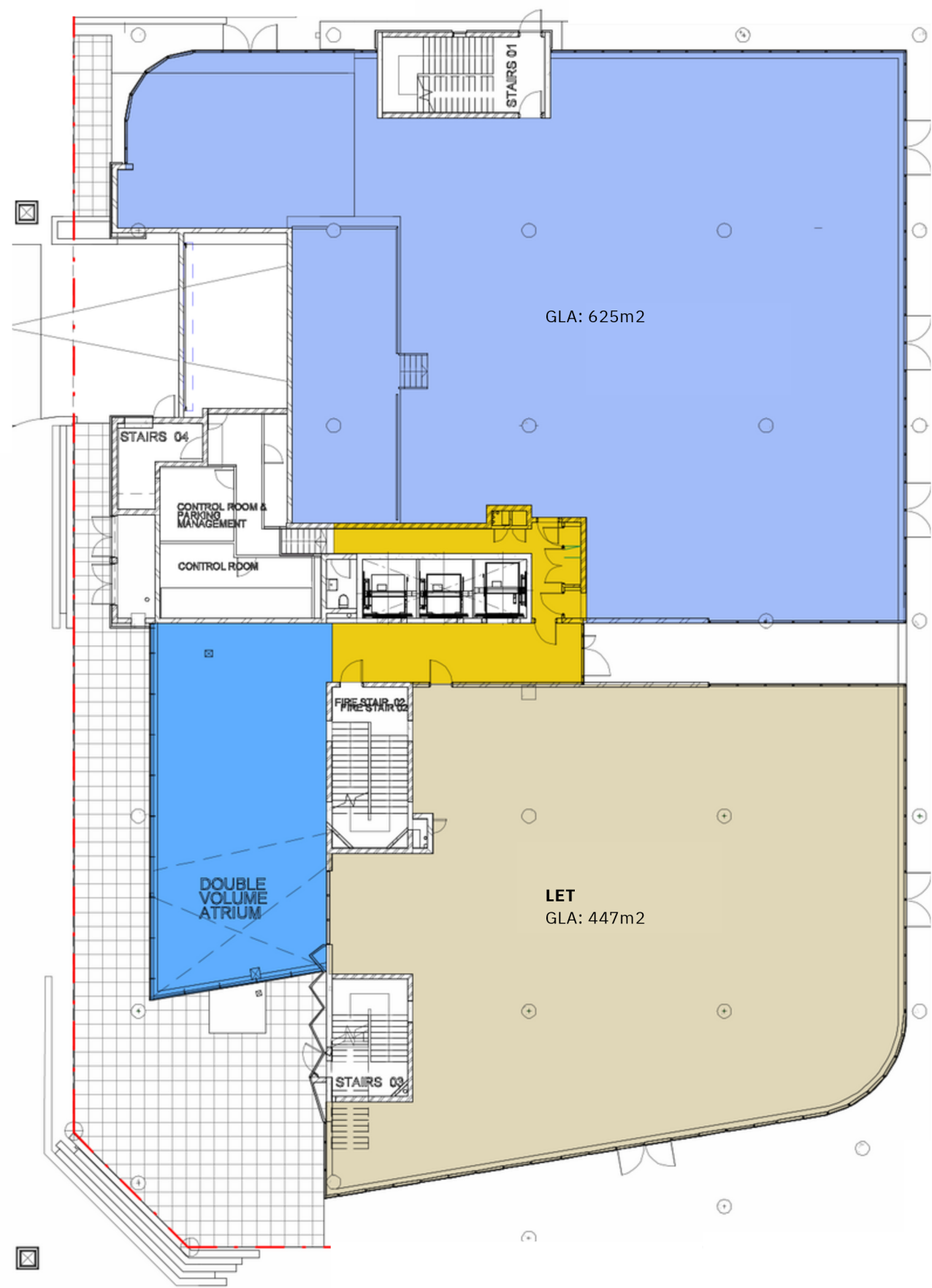
FLOORPLANS

SITE PLAN



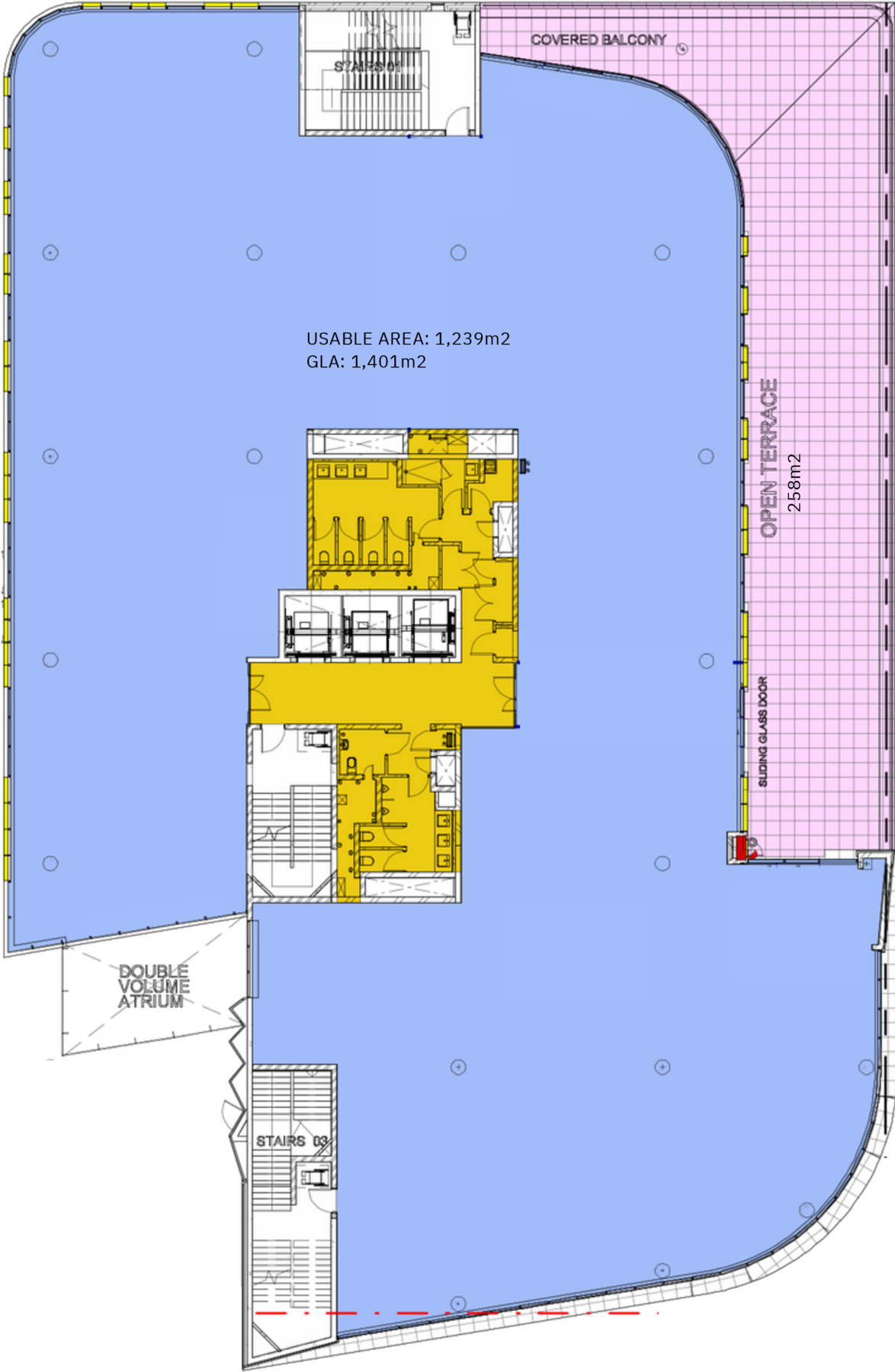
FLOORPLANS

GROUND FLOOR



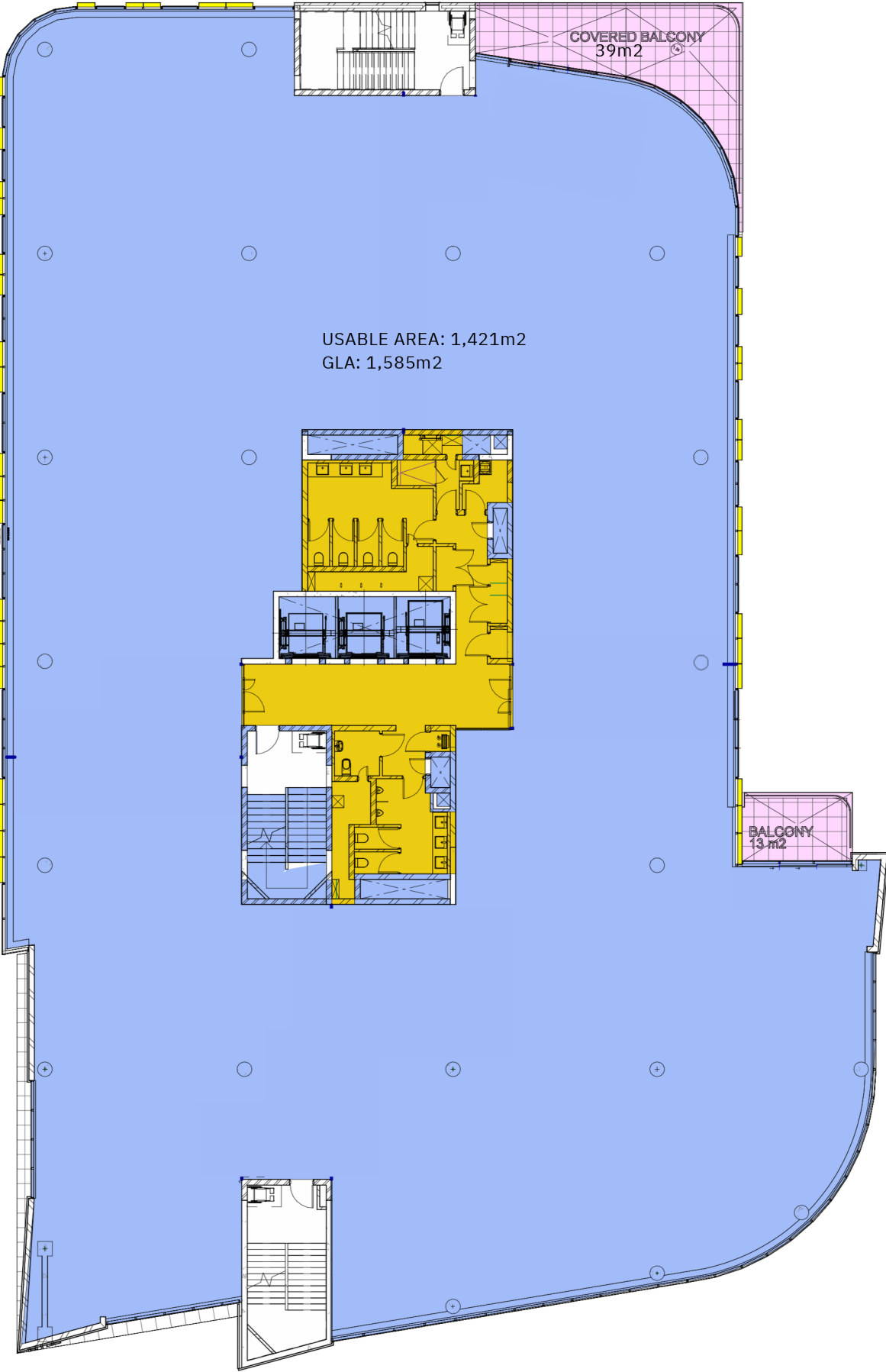
FLOORPLANS

FIRST FLOOR



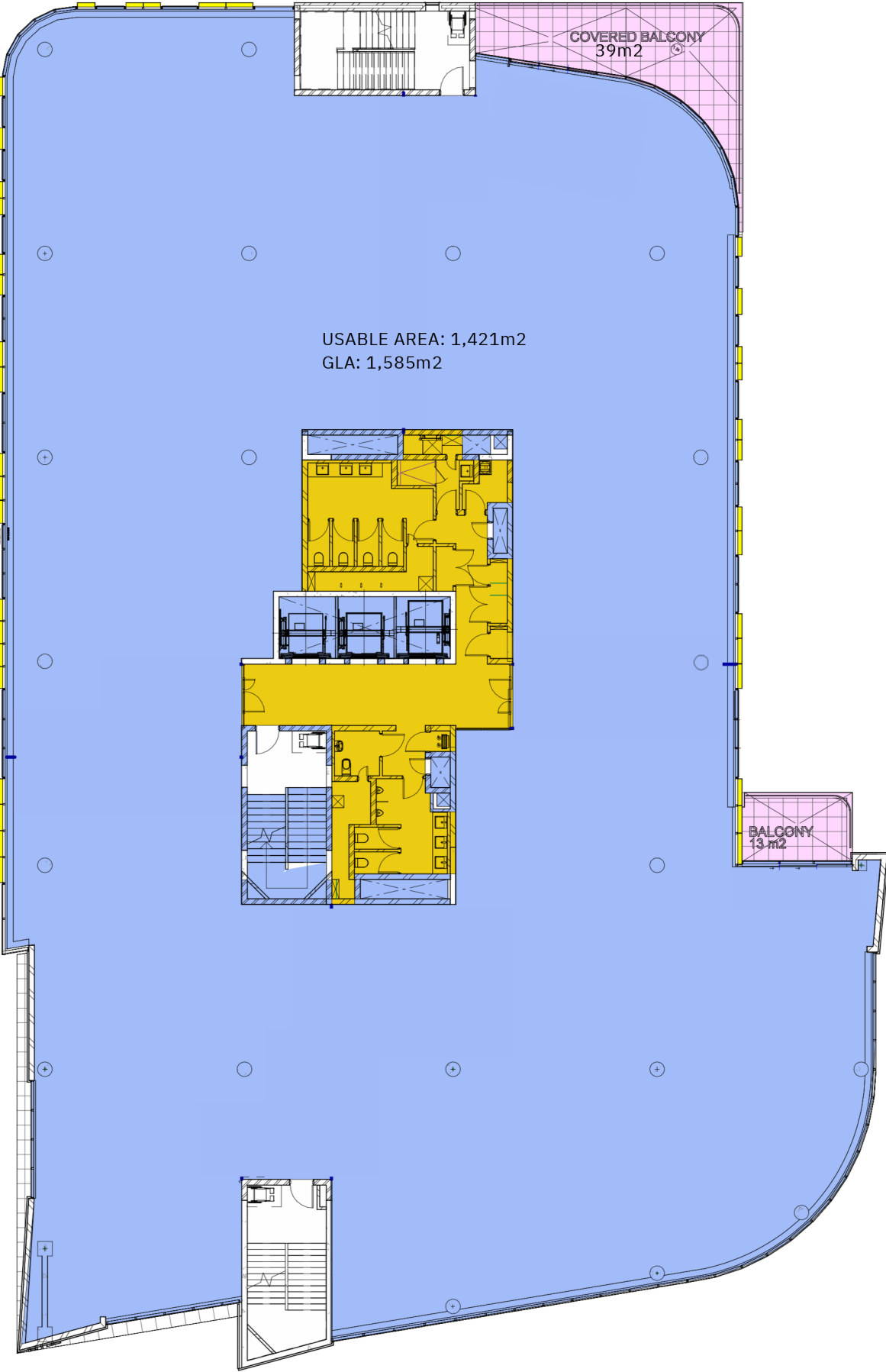
FLOORPLANS

SECOND FLOOR

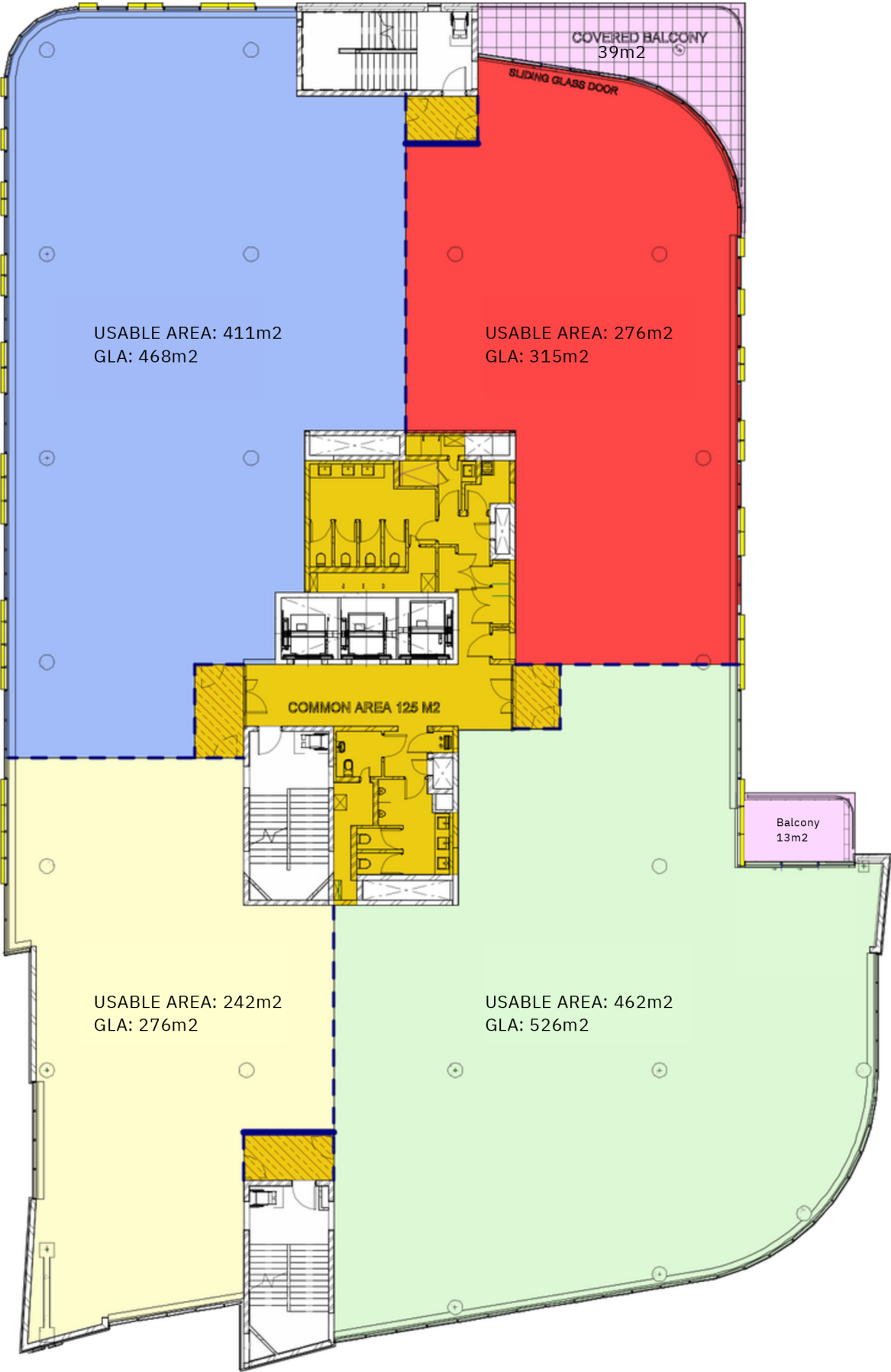


FLOORPLANS

THIRD FLOOR

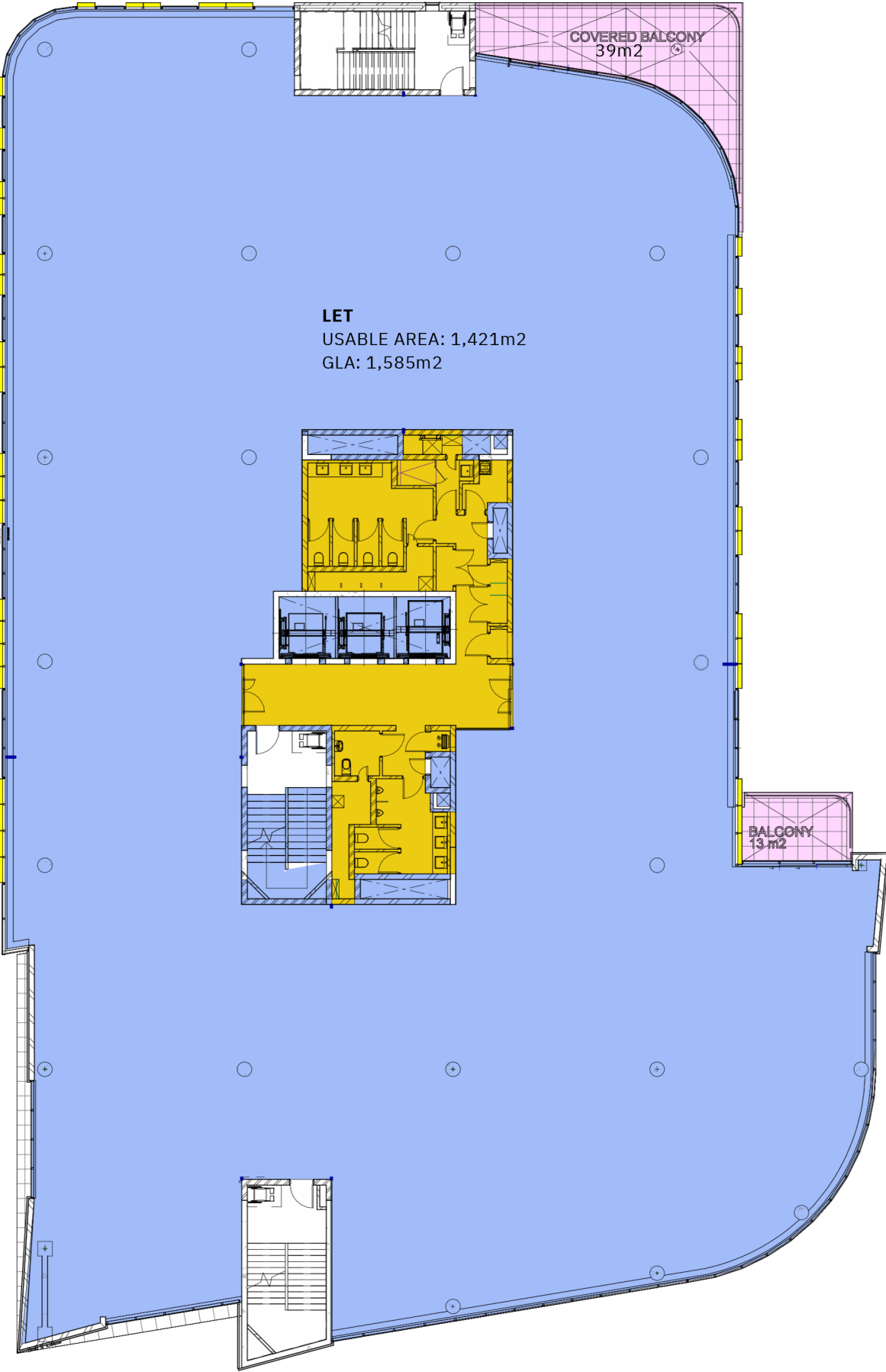


FLOORPLANS
THIRD FLOOR
INDICATIVE SUBDIVISION



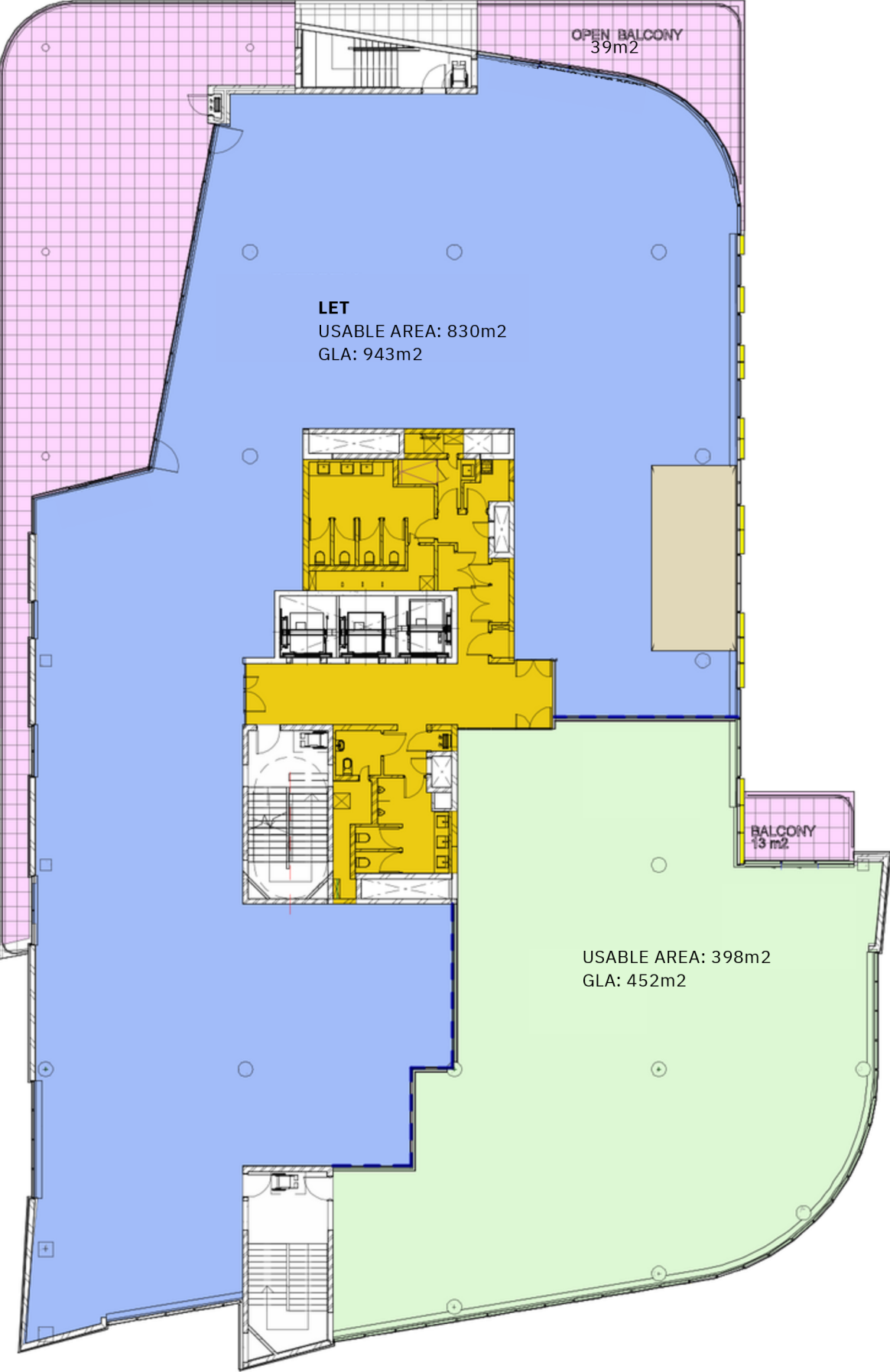
FLOORPLANS

FOURTH FLOOR



FLOORPLANS

FIFTH FLOOR





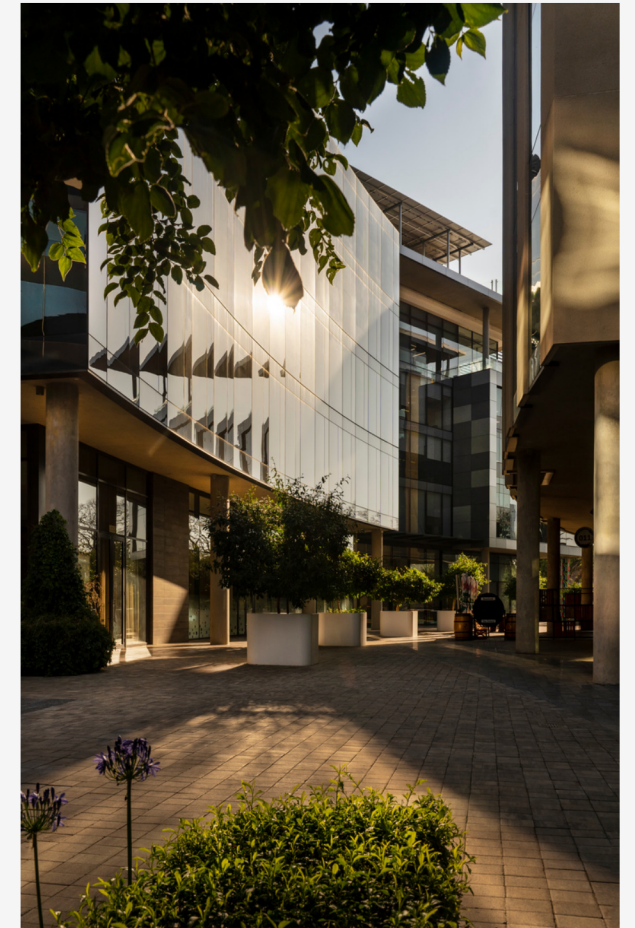
10 PARKS AREA SCHEDULE

FLOORS	OFFICE GROSS LETTABLE AREA	USABLE AREA	TERRACE AREA	RETAIL AREA	TO LET
Floor 5	1395	1228	238		452
Floor 4	1585	1421	52		
Floor 3	1585	1421	52		1585
Floor 2	1585	1421	52		1585
Floor 1	1401	1239	258		1401
Ground Floor				1072	625
Basement 1					
Basement 2					
Basement 3					
TOTALS	7551	6848	652	1072	5196
TOTAL BUILDING COMMERCIAL + RETAIL AREA	8623				

Building Highlights

Situated in the Oxford Parks Precinct which forms part of the greater Rosebank area, the iconic premier node in Johannesburg

- **Premium** Grade
- Excellent **exposure** and signage opportunity
- Highly **accessible** access and egress
- Multi modal **transport** in the Precinct
- Part of a **privately managed** city improvement district
- Unique and compelling **urban environment**
- **7min walk** to the **Gautrain** and **Rosebank Mall** offering a high quality lifestyle area and amenities
- **Outdoor entertainment** areas with vistas across Joburg's **urban forest**
- Targeting **6 Star Green Star** Designed Building
- Targeting **Carbon Net Zero**
- **Back-up power** including a **PV system**
- **Back-up water**
- **BMS** and other control points **measuring all consumables**



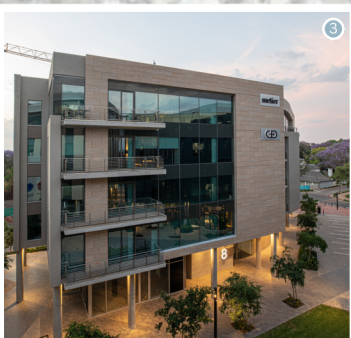
COMPLETED & CURRENT DEVELOPMENTS



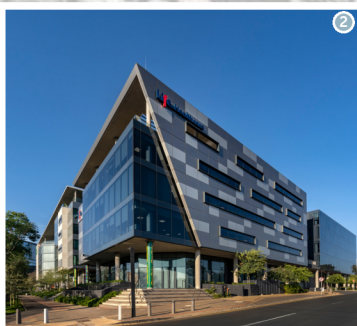
6 Parks Blvd | Feb 2020
IHS Towers, Sony Music, Sony Publishing,
and JLL



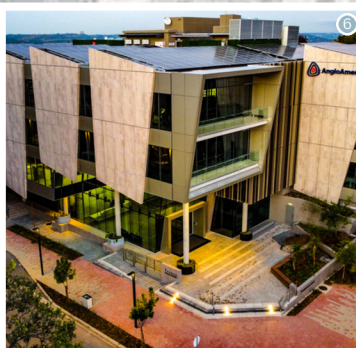
4 Parks Blvd | Aug 2021
Radisson RED Hotel



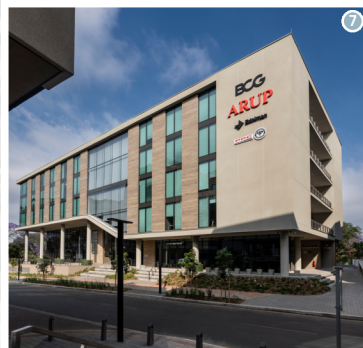
8 Parks Blvd | Oct 2020
Metier Private Equity, G+D Currency
Technology, Instinctif Partners, Anglo American
LWD, Zurich, and JLL



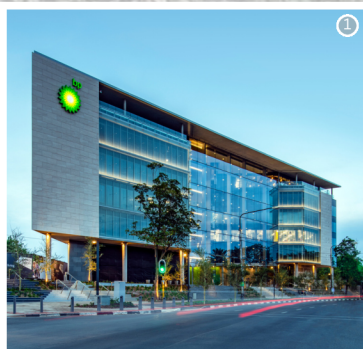
203 Oxford | Jan 2021
Life Healthcare HQ



7 Parks Blvd | Mar 2022
Anglo American Global Shared Services



5 Parks Blvd | Sep 2023
Boston Consulting Group, Edelman, Heidrick
and Struggles, Resilea, PPC, Arup, Skin Renewal,
and Intaprop



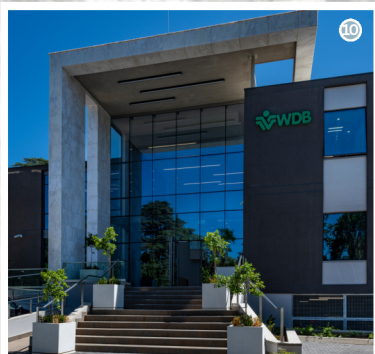
199 Oxford | Dec 2018
BP Southern Africa, Enaex Africa, Allied Gold,
Bluerock Atlantis, and Credo Wealth



10 Parks Blvd | May 2025
Allen & Overy and Minotti



55 Eastwood | Oct 2025
Baker McKenzie



WDB House | Jul 2019
Women's Development Bank

Commercial
Tenants



Retail
Tenants

Minotti
JOHANNESBURG

Qbar
by QUOIN ROCK

DOUBLESHOT
— coffee & tea —

Qsushi
by QUOIN ROCK

le fleur
CAFÉ

SKINrenewal

LIVY'S

THE POT
LUCK CLUB

GIN-EATERY
011

SHORTMARKET
THE CLUB
88 SHORTMARKET STREET

OBSCURA

Ethos

AFRICA
PADEL

MM
&
OPTICAL

BGB

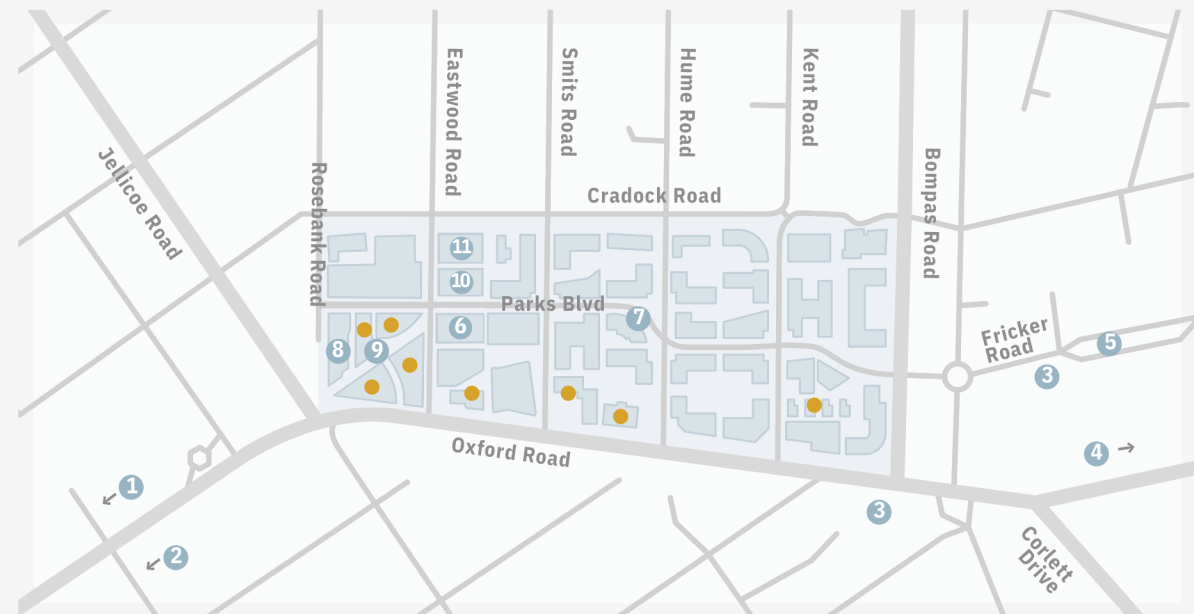
ZEDMEN

LEVINGERS
DRY CLEAN & SHOE CLINIC

joyJOZI

Joy Jozi

PRECINCT AMENITIES



Oxford Parks continues the concept of Life Connected. It is integrated and central with clean, safe and secure privately managed public spaces. Everything within the development is at a human scale and walkable with ample tree-lined roads and cycle lanes. The lifestyle focused concept includes precinct convenience through many bespoke retail outlets and access to a broad selection of amenities - all within an easy 8 minute walk from the development. Some key amenities include:

- | | | |
|--|--|---|
| <p>1 Rosebank Retail</p> <p>2 Rosebank Gautrain Station</p> <p>3 Gautrain Bus Stop</p> <p>4 Illovo Junction</p> <p>5 Grate Café</p> <p>6 Minotti</p> <p>7 Boutique Guesthouse (58 on Hume)</p> <p>8 Radisson RED</p> | <p>9 Restaurants and Services:</p> <ul style="list-style-type: none"> • Shortmarket Club • The Potluck Club • Qbar by Quoin Rock • Qsushi by Quoin Rock • Le Fleur • 011 Rosebank • Obscura • Ethos • BGR • Zedmen • M&M Optical • Levingers • Doubleshot | <p>10 Restaurants and Facilities</p> <ul style="list-style-type: none"> • Livy's Restaurant • Africa Padel <p>11 Joy Jozi</p> <p>● Commercial Offices</p> |
|--|--|---|



OXFORD PARKS

IMMEDIATE AMENITIES

- Hotel
- Conferencing and meeting facilities
- Restaurants, coffee shop, services
- Bespoke event venues
- Park-like environment
- Safe pedestrian movement
- Secure public parking







OXFORD PARKS

AMENITIES WITHIN A 1KM RADIUS

- Public transport includes taxis, buses and airport links
- Rosebank shopping hub
- Medical facilities
- Retail banks
- Schools and other educational institutes
- Conferencing facilities and auditorium
- Sport and health clubs
- Golf courses
- Places of worship
- Art galleries
- Parks and recreational public spaces
- An array of restaurants and speciality eateries



IHS

Towers of strength



SONY MUSIC



SONY MUSIC
JAPAN

CONTACT

Proudly Developed by:

INTAPROP

PROPERTY DEVELOPMENT
AND INVESTMENT

Tel: 011 731 1900

E-mail: info@intaprop.co.za

Web: www.intaprop.co.za

Physical address: Intaprop, Ground Floor,
5 Parks Boulevard, Oxford Parks, Dunkeld

An aerial photograph of a modern, multi-story building with a curved facade and large glass windows. The building features a green roof with solar panels and a rooftop terrace where people are gathered. The surrounding area includes trees and a paved walkway.

LIFE CONNECTED

**OXFORD
PARKS**

www.oxfordparks.co.za