

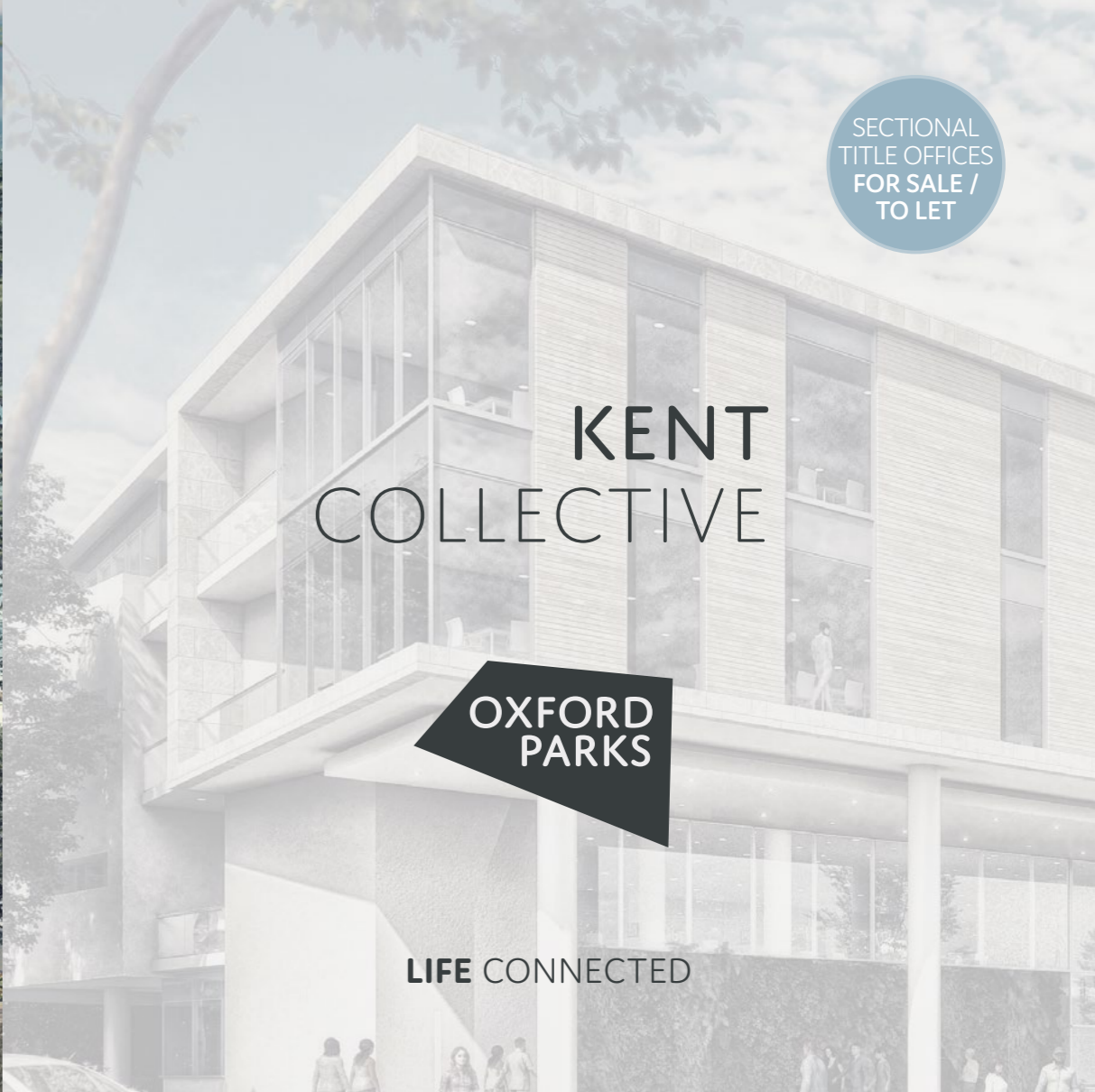


SECTIONAL
TITLE OFFICES
FOR SALE /
TO LET

KENT COLLECTIVE

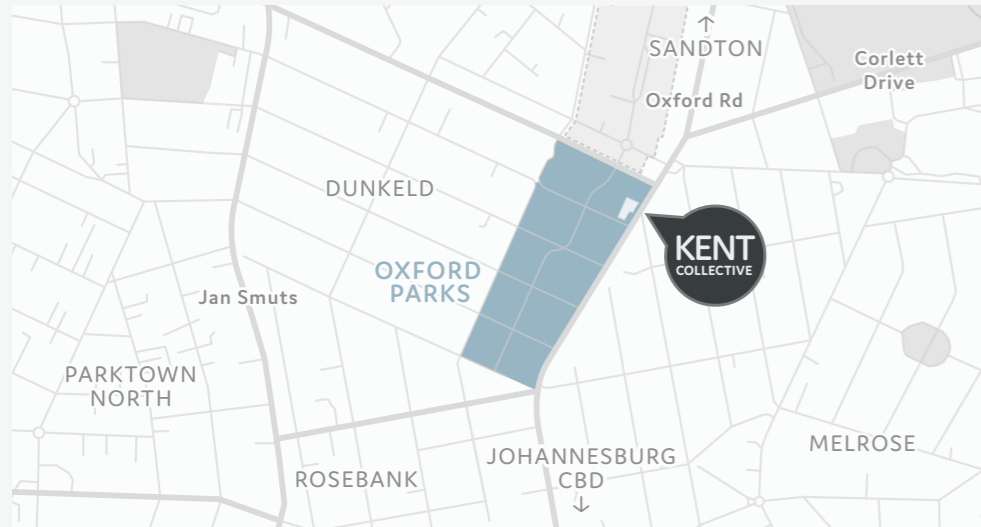
**OXFORD
PARKS**

LIFE CONNECTED



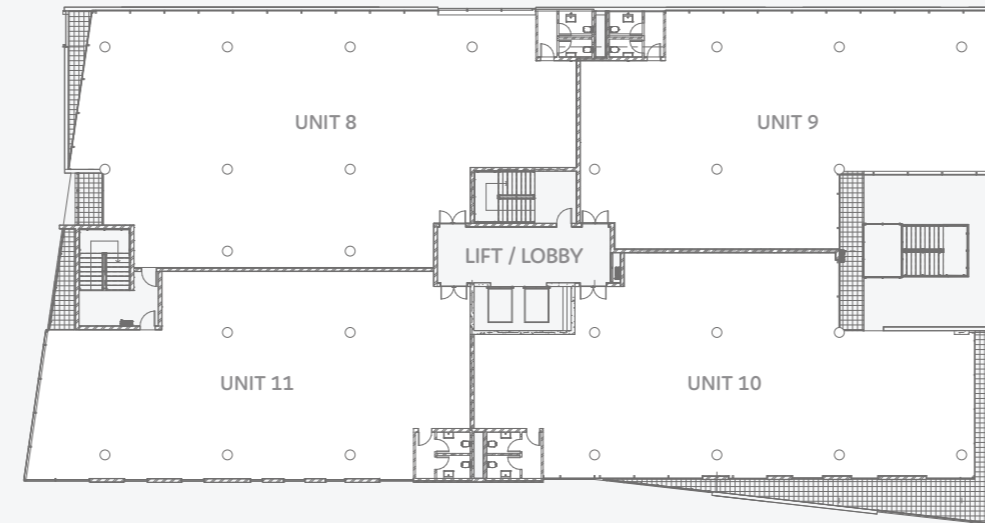
THE KENT COLLECTIVE DEVELOPMENT

Located in the vibrant new precinct called Oxford Parks, Kent Collective is central and integrated in its position within the new heart of the city. Kent Collective is accessible from 4 major highway offramps, is surrounded by a magnitude of high density and highly visible vehicle grids, and is positioned opposite a Gautrain bus stop. Oxford Parks truly exemplifies the connectivity of business, life & leisure. Kent Collective will be no exception to the high quality development finish that Oxford Parks prides itself on.



THE BUILDING

Kent Collective consists of three floors. The regular shaped floor plates easily accommodate both cellular and open plan office fit outs. Requirements for additional space can be achieved with the removal of the demising walls. Northeast and northwest facing office spaces provide for morning and afternoon natural light. Breakaway retreats are accessible with exclusive use balconies.



The top floor totals 1,380m² and comprises four offices ranging from 312m² to 423m² and has unobstructed vistas of Johannesburg's green canopies.

All floors feature the following highlights:

- Executive double door access
- Offices are constructed with a generous volume of 3.3m in height
- Each office includes exclusive use balconies
- Private ablution facilities are included in each office
- Direct atrium and basement access is offered with dual lifts, and the alternative use of the building circulation stairs
- Basement parking is included at 4 bays per 100m². If required, additional bays can be purchased

Range of office areas available: 312m² - 4,025m²

Range of balcony areas available: 5m² - 20m²

Parking bays included in sale: 4 bays/100m²

CONTACT

Jennifer Hepburn-Brown

Tel: 011 731 1900 Mobile: 076 600 1861

E-mail: jennifer@intaprop.co.za

Web: www.intaprop.co.za

Physical address: Intaprop, 1st Floor,
199 Oxford, Oxford Parks, Dunkeld

Proudly Developed by:

INTAPROP

PROPERTY DEVELOPMENT
AND INVESTMENT